



Scheda tecnica indumento/Garment technical data sheet – 08105

| Identificazione articolo/Item identification | | | | | |
|--|--|--|---|-----------------------------------|---------------|
| Cod. comm.le Industrial Starter/ IS commercial item code: | 08105 | Cod. art. fornitore/ Supplier item code*: | 6-046 | Cod. fornitore/ Supplier code: | 000675 |
| Cod. colore Industrial Starter/ Industrial Starter colour code: | 022 (verde marino / marine green) | <input checked="" type="checkbox"/> | Articolo del catalogo/Item from catalogue | | |
| | 040 (blu / blue) | <input type="checkbox"/> | Articolo personalizzato/Customized item | | |
| | 050 (bianco/white) | | Codice cliente/Customer code: | N/A | |
| | 110 (azzurro/light blue) | | | | |
| Nome articolo/Item name: | Camice Donna TeritalCotone/ Women's T/C Long coat | | | | |

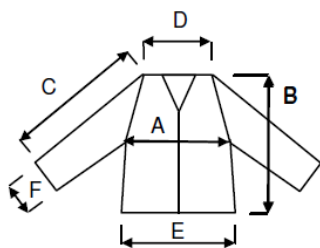
| Descrizione tecnica dell'articolo/Technical item description | | | |
|--|--|---|--|
| | Composizione/ Fabric composition | Colore/colour (Pantone) | Peso del tessuto/ Fabric weight [g/m ²] |
| Tessuto esterno principale/ Main outer shell | 65% poliestere terital 35% cotone poplin 89 x 63 / 65% terital polyester 35% cotton poplin 89 x 63 | Verde – Blu – Bianco - Nero / Green – Blue – White – Black | 155 |
| Accessori/Accessories: | Due tasche applicate e taschino sul petto, chiusura centrale con bottoni ricoperti da patta , martingala cucita, collo a camicia, chiusura polsini con bottone / Two patch pockets and chest pocket, central closure with buttons covered by flap, stitched martingale, shirt collar, removable wrist elastic, button cuffs | | |
| Loghi e ricami/ Logos & embroideries: |  | | |
| Taglie/Sizes: | S, M, L, XL, XXL | | |
| Imballo/Packages: | n. 20 pz in un cartone imbustati singolarmente / n. 1 piece per polybag, n. 20 pcs per export carton | | |
| Istruzioni lavaggio/Care label: |  | | |

| Conformità alle norme CE/Conformity with EC standards | | | |
|---|---|--|----------------------------|
| Cat.DPI/ PPE Category: | I | Norme CE e livelli di protezione/ EC standards and protection levels: | EN ISO 13688 : 2013 |
| Certificato d'esame CE n° / EC type-examination certificate No.: | | N/A | Data/Date: N/A |
| Ente notificatore / Notified body: | | N/A | N°/ No : N/A |
| Lingue Nota Informativa/ Manufacturer's notes languages: | IT,ES, CZ,PL,EN,PT,SK,HU,FR,DE,LT,RS,GR,SI, LV.HR,EE,TR,RO | | |

Scheda tecnica indumento/Garment technical data sheet – 08105

| | | Misure delle taglie/Size measurements [cm] | | | | |
|------------------------------------|--|--|------------|------------|------------|------------|
| Taglia/Size: | | S | M | L | XL | XXL |
| A. Torace / Chest: | | 104 | 110 | 116 | 126 | 140 |
| B. Lunghezza totale / Back lenght: | | 102 | 106 | 110 | 113 | 116 |
| C. Manica / Sleeve: | | 59 | 61 | 63 | 65 | 67 |
| D. Spalle / Shoulder: | | 42 | 44 | 46 | 48 | 50 |
| F. Polsino / Sleeve opening : | | 24 | 24 | 24 | 25 | 25 |

Disegno e foto/Drawing and photo



Vicenza, 01/09/2019



Resp. acquisti/Purchasing manager